

PRESENTED BY
WINONA'S HEMP & HERITAGE FARM
ANISHINAABE AGRICULTURE INSTITUTE.



Winona LaDuke's Hemp and Heritage Farm with Anishinaabe Agriculture Institute will generate local wealth in our community by establishing a training institute for indigenous foods and hemp farming and working with our youth to create the next generation of Anishinaabe farmers.



WWW.WINONASHEMP.COM/AAI



5TH ANNUAL INDIGENOUS HEMP CONFERENCE



VIRTUAL AND IN-PERSON



March 1st -3rd, 2022

WWW.WINONASHEMP.COM



AGENDA

Virtual Day and In-Person at Akiing
Tuesday March 1st 12:00pm-5:00pm CST
49164 Hwy 225, Ponsford, MN 56575



12:00PM-12:30PM
OPENING AT AKIING
Hosts: Winona LaDuke & Winona's Hemp Staff

1:00PM-2:00PM
NEW DIRECTIONS: INNOVATION & TECHNOLOGY
• Host: Ira Vandever, Turquoise Indigo Fibers (Hemp & Textiles)
• Jose LaSalle,- HEMPEX overview
• Lisa Sundberg, Hempcrete & Construction

2:00PM- 3:00PM
HEMP REGULATIONS PANEL
Host: Winona LaDuke
(opening & introductions, Q&A)
• Anthony Cortilet and Katy Mutschler, (MN Dept of Ag.) (30 min)
• Anna Chanthavongseng & Social Equity Committee, [National Hemp Association](#) (15min)
• Hunter Buffington, [Santa Fe Farms](#) (Hemp Policy & Feed) (15min)

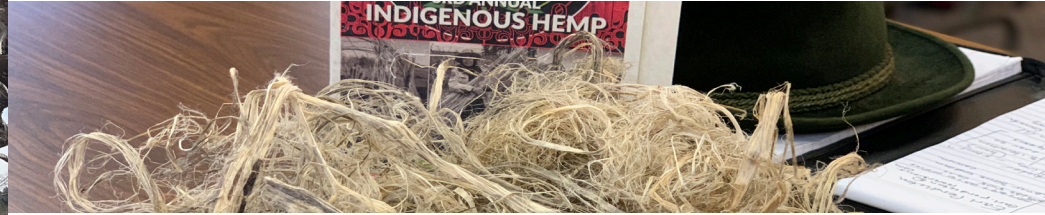
3:00PM-4:00PM
TRIBAL FARMER PANEL
Hosts: David Manuel (opening & introductions, Q&A)
• Alex White Plume, [White Plume Hemp](#)
• Marc Grignon, Director at [Hempstead Project Heart](#)
• Sheldon Thomas
• Hemp Tribal Research Initiative- Michigan Q&A

4:00PM-5:30PM
SEEDS & FARM PRODUCTION METHOD- FIBER HEMP
Host: Winona LaDuke
(opening & introductions, Q&A)
• Ron Chilton, Akiing
• Dr. George Weiblen, UMN
• Dr. Jonathan Wenger, UMN
• Robin Destiche & Hana Gabrielová / [konopiUS](#)
• James Dedecker, MSU (Variety Trials or Selection)
• Ken Anderson, [Legacy Hemp](#)

5:30PM-6:00PM CLOSING COMMENTS
Dinner and to Maplelag

AGENDA

Maplelag Resort
Policy, Seeds, Farming and In-Person Workshops & Demonstrations
Wednesday, March 2nd 8:30am-7:30pm CST
30501 Maplelag Road, Callaway, MN 56521



8:30AM -9:30AM
OPENING CEREMONY & WELCOME (BREAKFAST)
Winona LaDuke -New Green Revolution Hemp will Heal Mother Earth- Fiber and Life

9:30AM-10:30AM
HEMP & INNOVATION- SUPER CAPACITORS, THE FUTURE OF BATTERIES
• Jose LaSalle, Hempax Energy Systems and
• Clemon Dabney, UM (Hemp, Soil and Carbon and Bioremediation)

10:30AM-11:30AM
TRIBAL HEMP PRODUCERS, LAY OF THE LAND AND TECHNICAL , EQUIPMENT , SEEDS AND OTHER LESSONS AND NEEDS
• Cheryljn Spears
• Sheldon Thomas
• Ron Chilton and, Darren Klarer, Akiing
• Dani Pietras

11:30AM -12:30PM
HEMP FIBER PROCESSING- TEXTILES- VALUE ADDED AND THE LAY OF THE LAND
• Erin Axelrod, LIFT Economy
• Ira Vandever, [Turquoise Indigo Fibers](#)

12:30PM- 1:30- LUNCH WITH SOME TREATS LUNCH & HEMP FOODS DEMONSTRATION
• Shadi Ramey - Dishes from cookbook, [Hemp Can Change the World](#)

1:30PM-2:30PM - GROWERS, SEEDS AND COOPERATIVES
Discussion groups - Access to Seeds,

development of an *Indigenous Hemp cooperative*. Seed variety selection and Russian Hemp varieties.
• David Manuel
• Winona LaDuke
• Ken Anderson

1:30PM-3:00PM TRIBAL HEMP AND CANNABIS POLICIES AND STATE POLICIES
• Doug Lee
• James Shimek
• Mary Jane Oatman
• Anthony Cordilet

3:00PM-4:00PM DEMONSTRATIONS Decorticator
Hands-on Afternoon Demonstrations
Papermaking Demonstration
• Kyra Bingham (downstairs)

3:00PM-4:00PM WEAVING DEMONSTRATION
• Ira Vandever, [Turquoise Indigo Fibers](#)
• Tasheena Littleben, Dine' Weaver (booth space)

4:00PM-5:00PM HEMP , CANNABIS AND JUSTICE
• Joseph Van Gorp, Anishinaabe Agriculture Moderating
• Angela Dawson, [40 Acres Cooperative](#)
• MaryJane Oatman, [THC Magazine](#)
• Doug Lee

6:30PM DINNER AT MAPLELAG
Relax and find some cool people to talk to
Films: Patagonia- *Misunderstood* and *Standing Silent Nation*.

AGENDA

Maplelag Resort
Policy, Seeds, Farming and In-Person Workshops & Demonstrations
Thursday, March 3rd 8:30am-1:30pm CST
30501 Maplelag Road, Callaway, MN 56521



Via Ira Vandever Hemp wool Rug by Roy Kady

8:30AM -9:30AM
WELCOME & BREAKFAST

9:30AM-10:30AM
MORNING ROUND TABLE
Hemp and the Green Construction
-How to bring Hemp to the North
• Sheldon Thomas
• Marcus Grignon

11:00AM-12:30PM
ROUND TABLE, Questions, seeds, policy strategies, and the New Green Revolution Open Discussions

12:30PM-1:30PM
LUNCH
Closing Comments

Follow up, informal after close, for those staying for the Farming Conference, stay in your room, otherwise stay and visit as you like, ski, etc.

Our conference follow up will be then. The White Earth Land Recovery Project 19th Annual Indigenous Farming Conference (IFC) Starts March 3rd through March 6th afternoon:
• check-in 3pm
• dinner at 6:30pm

To register for that conference go to [www.welrp.org](#).

We are following state and/or CDC COVID19 guidelines at this event. Registration closes: February 28th, 2022.

MEET OUR INDIGENOUS HEMP CONFERENCE PANEL + MORE



Ira M. Vandever, Dine'



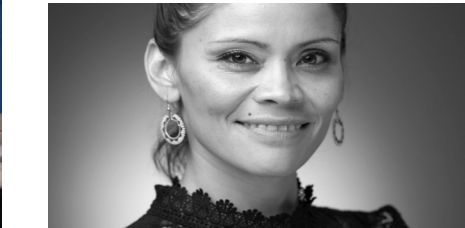
Tasheena Little Ben, Dine'



Jose LaSalle, HEMPAX



Lisa Sundberg



Mary Jane Oatman, THC Magazine



Anthony Cortilet, MN Dept. Agriculture (MDA)



Hunter Buffington, Santa Fe Farms



Katy Mutschler, MN Dept. Agriculture (MDA)



David Manuel, Red Lake



Marcus Grignon, Hempstead Project Heart

OUR PANEL



NEW DIRECTIONS: INNOVATION & TECHNOLOGY

Ira Vandever, founder of [Turquoise Indigo Fiber](#), has spent the last year testing different types of hemp for phytoremediation and also for fiber production. He works closely with Winona and her hemp and has taken a bunch to be processed in the traditional Navajo way of dealing with fiber. He is experimenting with paper, toilet paper, textiles and 3d printing filament, as his products with hemp. He looks forward to spending the next year advocating and educating the Dineh people on the importance of hemp, as well as working with engineers at Navajo technical university in developing machines and technology for harvesting hemp.

Tasheena LittleBen is a Dine' from Rock Point, AZ. She is a traditional weaver specializing in the eye dazzler style of her grandmother. Tasheena recently moved home to the reservation to pursue her talents in textile weaving. She plans to have a large flock and continue to teach her nieces and nephews the art of weaving. Recently she has picked up integrating hemp into her weavings and has found the fiber to be just as beautiful as the traditional churro wool her family has used for centuries.

Jose LaSalle is an inventor in the fields of renewable energy, green building, and water filtration. Raised from an African, Chamoru, Cherokee, and Celtic ancestry, his work is rooted in a heritage of multi-cultural solidarity movements. Jose earned his bachelor of science in electrical engineering from the University of Massachusetts Amherst in 2016. His mission is to create regenerative technology for the New Green Revolution. He is the founder and CEO of HEMPAX, which is developing hemp-based energy storage

devices for (micro)grid and transportation applications.

Nathaniel Doyno is a clean energy expert, social entrepreneur, impact investor, and policy advocate with over 15 years of experience spanning electric utilities, green buildings, various alternative and renewable energy technologies and markets, regenerative business models, and impact investing. He is an adept program and project manager, start-up and growth business strategist, analyst, and fundraiser whose consulting clients have included Fortune 100 companies, venture-backed startups, impact philanthropies, as well as social ventures and non-profits.

Lisa Sundberg, Yurok native and member of the Federally recognized Trinidad Rancheria, located in Humboldt County, Northern California. She's been active in health care having served on the United Indian Health Services Board (UIHS) for 6 years and a delegate for the California Rural Indian Health Board (CRIHB) and is now the co-chair to the National Institute of Health's Tribal Advisory Committee (NIH TAC). Her initiative, Think Hemp, will make the Seed to Home program available to communities who want to create a micro industry for [hempcrete housing](#), fiber and eventually foods and more.

HEMP REGULATIONS

Anna Chanthavongseng, [National Hemp Association](#), [Assistant Executive Director](#) A former educator, Anna has a decade of working and sponsoring organizations in different parts of Africa to countless hours of volunteering for her local community, the Standing Committee for Social Equity is a passion project and mission that she believes the team can accomplish and set inspirations for everyone in the hemp industry.

OUR PANEL



Mary Jane Oatman, [THC Magazine](#), is an enrolled member of the Nez Perce Tribe and descendant of the Delaware Tribe and proud mother of three beautiful people. She is the founder of the Indigenous CANNabis Coalition (ICANNC) and publisher of THC Magazine, host of THC SmokeSignals Podcast and is in the early stages of starting THC Global Media. The mission of Tribal Hemp & Cannabis Global Media (THCGM) is to inform, engage, and connect people around the world in support of the preservation and protection of Indigenous plant medicines, homelands, and stories. In 2009, Oatman was the youngest member appointed by President Barack Obama to serve on the National Advisory Council on Indian Education, while also serving as the first Director of Indian Education for the state of Idaho.

Anthony Cortilet has served as a **Weed Scientist with the Minnesota Department of Agriculture (MDA)** since 1998 and currently supervises the Noxious Weed and Industrial Hemp Programs. He has 30 years of professional experience working with plant species, habitat management, and ecological preservation. In 2010, due to his plant sciences background, he was appointed as the MDA's representative for both industrial hemp and medical cannabis by the commissioner of Agriculture. He holds a Bachelor's Degree in Fisheries and Wildlife Biology and a Master's Degree in Agronomy – Weed Science, both from Iowa State University.

Katy Mutschler is the **Hemp Program Coordinator for the Minnesota Department of Agriculture (MDA)**. She has worked at the MDA for 10 years, with most of her time devoted to plant pest quarantines and regulations. She has been with the Hemp Program since May 2019. In addition to her time at MDA, Katy has also worked for the United States Department of Agriculture, Plant Protection and Quarantine. **Hunter Buffington** recently joined the [Santa Fe Farms](#) team as the VP of Policy & Advocacy continuing her work as a Hemp Public policy expert. Hunter utilizes her experience working with regulators, policy makers, businesses, farmers and livestock producers to implement strategies for development of the hemp industry. Her background in sustainable development of local economies brings a focus on ensuring that the emerging hemp industry development includes not only economic but also environmental and social benefits to its participants. Her goals align with the drive of Santa Fe Farms to partner with Native peoples, and a focus on carbon sequestration in Agriculture and industry where economics are driven by stewardship and innovation.

TRIBAL FARMERS

David Manuel works for Red Lake Economic Development and Planning as Hemp Coordinator and is tasked with training tribal members to successfully engage in sustainable agricultural activities for the purpose of creating new economic opportunities. David is an enrolled member of the Red Lake Band of Chippewa Indians and resides there as well.

OUR PANEL

Marcus Grignon is Director at [Hempstead Project Heart](#), and the Technical Assistance Specialist with NiiJii Capital Partners, Inc, a native community development financial institution. Hempstead Project Heart is a national agricultural extension tool for Tribal Colleges/Universities to engage hemp production. Marcus is currently working with the College of Menominee Nation, a tribal college controlled by the Menominee Nation, through support from the Native American Agriculture Fund on the development of a hemp production feasibility study to support the foundation of a hemp supply chain that runs through Indian Country.

Elisa Anna Grossman is a member of the Zhiibaahaasing First Nation and has Mexican heritage. She is an environmental stewardship research scholar at Saginaw Chippewa Tribal College and is part of the STEAM Student Organization. She works closely with Dr. James DeDecker and Kathleen J. Hart on the Hemp Tribal Research Initiative at Michigan State University TRIM project.

Kathleen J. Hart is the chair of the Saginaw Chippewa Indian Tribes (SCIT) Elder Advisory Board, and is the elder delegate for SCIT on the Michigan Indian Elders Association (MEIA). She is also the USDA Equity Program Coordinator in the Land Grant office at the Saginaw Chippewa Tribal College. She has 11 years of experience developing educational programs and oversees the STEAM Student Organization. Currently she is collaborating with Bay Mills Community College, Michigan State University and Ziibimijwang Farm on the Hemp Tribal Research Initiative for Michigan TRIM project.

SEEDS & FARM PRODUCTION METHOD- FIBER

Dr. George Weiblen is the Science Director of the Bell Museum and a curator of plants. As a Distinguished McKnight

University Professor, he holds tenure in the Department of Plant and Microbial Biology and teaches in the College of Biological Sciences. His genetic research examines figs, mulberries, nettles, hops, and hemp. His laboratory maintains the first Drug Enforcement Administration registration for Cannabis genetic research in the United States. Weiblen has collaborated with Anishinaabe and Dakota communities since 2017 on emerging agronomic opportunities in industrial hemp production.

Dr. Jonathan Wenger is a Research Associate studying Cannabis genetics with Professor George Weiblen in the Department Plant & Microbial Biology at the University of Minnesota (UMN). His research focuses on the genomics of cannabinoid traits in laboratory, feral, and industrial hemp (IH) populations. He has managed Cannabis laboratory projects in quantitative trait locus (QTL) mapping, feral and IH genetics. His field research projects have included IH grain variety trials supported by the Minnesota Department of Agriculture Industrial Hemp Pilot Program and Minnesota feral Cannabis population studies. He has worked with Sisseton Wahpeton Oyate since 2018 to study fiber hemp and to domesticate sovereign fiber hemp from feral populations found on the Lake Traverse Reservation.

TRIBAL HEMP AND CANNABIS & STATE POLICIES

Doug Lee is CEO and founder of White Clay Industries and is a USDA Hemp farmer on White Earth.

James Shimek is Red Lake Anishinaabe living on White Earth. He has experience growing cannabis for about 7 years and is CEO and co-founder of J&J Farms. He is currently the Cannabis Cultivation Coordinator for Waabigwan Mashkiki and White Earth Enterprises.

MEET OUR INDIGENOUS HEMP CONFERENCE PANEL + MORE



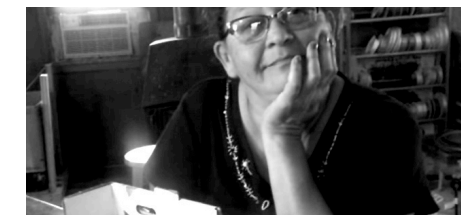
Elisa Anna Grossman, Saginaw Chippewa Tribal College



Hana Gabrielová, Czech Hemp Cluster



James DeDecker, PhD



Teresa LaDuke, TBazz Botanicals



Erin Axelrod, LIFT Economy



Kathleen J. Hart, Saginaw Chippewa Tribal College



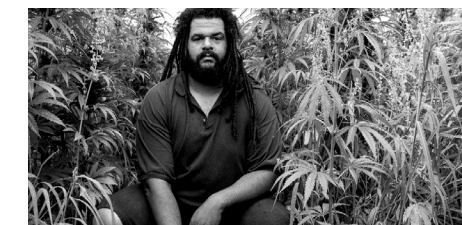
Robin Destiche, konopiUS



Shadi Ramey



Angela Dawson, 40 Acres Cooperative



Clemon Dabney, MN Food Forest

OUR PANEL



SEEDS & FARM PRODUCTION METHOD- FIBER

Hana Gabrielová, Czech Hemp Cluster association is a 20-year veteran within the hemp industry. In Europe she owns and operates Hempoint which does farming, food products, consulting, international trade and EU sustainability projects. She is the co-founder of konopiUS for USA industrial hemp planting seed genetics. Hempoint & konopiUS are heavily engaged in distribution of EU registered hemp seed varieties internationally. Hana works also as president of the CzechHemp cluster association which is involved in hemp and cannabis policy in the Czech Republic.

Robin Destiche is a co-founder of [konopiUS](#) which is engaged in industrial hemp planting seed distribution. He has been working on international hemp projects for 5 years. His current projects include: international seed distribution, decortication, product development, market research and farming. Robin oversees importing and exporting for Hempoint in Europe and the USA as co-founder of konopiUS. Robin works with trading partners in 8 countries and has developed pathways for trade in the hemp industry.

James DeDecker, PhD is Director of the Michigan State University Upper Peninsula Research and Extension Center (UPREC) in Chatham, MI. He has led hemp research and outreach at MSU since 2018, and coordinates the Hemp Tribal Research Initiative for Michigan (Hemp TRIM). The Hemp TRIM project team includes

tribal colleges and farms across Michigan collaborating on hemp variety trials and community education. James has partnered with Indigenous communities in Michigan on other food and agriculture projects since 2014.

Ken Anderson, Legacy Seeds, is one of the foundational leaders in development of the seed genetics and value added materials for fiber hemp. He has been responsible for seeding thousands of acres and was involved in the development of X 59, one of the premier dual crop varieties.

HEMP FOOD DEMONSTRATION

Shadi Ramey is an accomplished hemp innovator and thought-leader, fiercely combining her talents as a Chef, product developer and citizen of the world to raise awareness about the power of hemp. Her first cookbook, [Hemp Can Change the World](#), was released on December, 21, 2020. The cookbook is one of the first books written on hemp in over 100 years and is the first carbon neutral book project! She also has experience in sustainable economic development and more specifically in carbon negative business practices.

Teresa LaDuke, TBazz Botanicals, is enrolled as a band member of the White Earth Mississippi Band. She has been a wild crafter for many years and makes balms, tinctures, teas and other magic potions. She works for Akiing as a community organizer and Honor the Earth's grantmaking to grassroots organizations across the native nations homelands.



HEMP, CANNABIS AND JUSTICE

Angela Dawson, 40 Acres Cooperative, is a fourth-generation Midwest farmer who has several degrees and certificates in business management. She has been a cooperative business developer focusing on food security in urban markets for over ten years, including serving as the director for the Northside Food Project, which included developing a neighborhood farmer's market and providing nutrition education and cooking demonstrations. Angela is the developer and proprietor of a new genetic strain of high CBD, low THC named Wunder Woman, named after the spirit of the original indigenous woman warrior who fought to protect women, children, and the environment. Her work has been featured in several publications including InStyle, Mashable, BlackTech and Fox 9. She has authored several publications.

Doug Lee is CEO and founder of White Clay Industries and is a USDA Hemp farmer on White Earth.

HEMP & INNOVATION-SUPER CAPACITORS, THE FUTURE OF BATTERIES

Clemon Dabney is Owner of MN Food Forest. Clemon Dabney III has a B.A. in Behavioral Neuroscience from the University of St. Thomas as well as an M.S. in Applied Plant Sciences with a specialization in Plant Breeding and Molecular Genetics from the University of Minnesota. Clemon is currently working on a PhD in Plant

OUR PANEL

Biology from the University of Minnesota on the genetics of cannabinoid and terpene production in Cannabis sativa. Clemon has held a IHPP permit since 2017. Clemon also is the owner of MN Food Forest which is a farm that produces maple syrup, honey, ramps and gourmet mushrooms as well as makes maple cream and maple sugar.

TRIBAL HEMP PRODUCERS, LAY OF THE LAND & TECHNICAL EQUIPMENT, SEEDS AND OTHER LESSONS AND NEEDS

Ronald Chilton, Anishinaabe, Mississippi band, has been growing and processing fiber hemp for six years on the White Earth reservation, and has extensive farm experience as well as leadership at Winona's Hemp and Akiing.

HEMP FIBER PROCESSING, TEXTILES, VALUE ADDED AND THE LAY OF THE LAND

Erin Axelrod is a partner and worker-owner at [LIFT Economy](#) specializing in accelerating the spread of land-based businesses in the Next Economy. She does this through a range of initiatives including client work, a regenerative agriculture investor network, the Force for Good Fund (a \$1.1M pilot fund that invests in women-owned and indigenous-led and POC-led social enterprises). She is honored to have been working with Winona LaDuke for the past 4 years in the effort to bring back a bioregional hemp textile economy to White Earth.



100-years ago we have a choice between a carbohydrate economy and a hydrocarbon economy. We made the wrong choice. Hemp is the plant for the future, we can see textiles, construction materials, and packaging from hemp, and we can see the emergence of the New Green Revolution, that's what we call it.

Winona's Hemp and Anishinaabe Agriculture Institute are partnering to create the **New Green Revolution** that's an entirely new economy which will change the world.



“HEMP IS OUR NEW BUFFALO” - ALEX WHITE PLUME

Alexander White Plume (White Plume Hemp) is the only farmer to plant, cultivate, produce, sell and deliver a hemp crop within the borders of the USA since 1968.

Alex White Plume, a Lakota living on the Pine Ridge Reservation, has grown industrial hemp on his land since 2000. Alex's challenge to the legality of the injunction has been continually pushed back, preventing justice.

White Plume's case was heard by the Eighth Circuit Court of Appeals in August, 2004, two years after the injunction was first issued. Alex and his family didn't plant a crop in 2003, but the seed has risen once again, refusing to be eradicated.

On March 28, 2016 Judge Jeffrey Viken in a ruling lifted the more than decade old injunction that prevented Alex White Plume from establishing a industrial hemp market on the Pine Ridge Indian Reservation recognized a shifting American legal and cultural landscape pertaining to marijuana and industrial hemp. The ruling by Judge Viken signifies a reassertion of tribal sovereignty as a federal court has implied that Tribal-nations do have the same rights as states to explore the economic possibilities of industrial hemp.

“I'm not really worried about the feds coming in again to take hemp. If it was marijuana that would be a different story, but it's time that people recognized hemp as a solution to a of the issues taking place with our environment. We respected the restraining order and just stood on the sidelines for the last 15 years. But now it's time to allow us our sovereign rights,” - Alex White Plume



INDUSTRIAL HEMP

hemp fiber. hemp hurd. hemp seed

Hemp Facts

Industrial Hemp contains less than 1% THC

(Tetrahydrocannabinoids)
Hemp is not a drug.
Hemp is not Marijuana.

Hemp is a RESOURCE

Hemp fiber is the STRONGEST NATURAL FIBER in the world.

20 years for tress to mature
4 mths for hemp

Hemp can yield 3-8 dry tons of fiber per acre, FOUR TIMES what an average forest can yield.

Both the Magna Carta the Gutenberg Bible, and even first drafts of the Constitution were printed on hemp fiber paper.



Paper, fertilizers, soil nutrients, and animal bedding can be made from leftover waste when processing hemp.

This means ALL parts of the plant are being used, or put back into the earth.

1 acre of hemp = 1,000 gals. of methanol

1941 Ford motor company produced an experimental automobile with a plastic body composed of 70% cellulose fibers from hemp. The car body could absorb blows 10x as great as steel without denting. The car was designed to run on hemp fuel. Because of the ban on both hemp the car was never mass produced.

Anything made out of cotton, timber, or petroleum can be made out of hemp

Hemp seeds contain nutritious, polyunsaturated fatty acids (PUFAs) 80% the highest amount found within the plant kingdom.

Highly Nutritional for both humans & animals.

contains rare fatty acid Gamma-linolenic proven to help treat...

- Arthritis
- Neurodermatitis
- Premenstrual Syndrome

No other single plant source provides complete protein in such an easily digestible form, nor has the oils essential to life in as perfect a ratio for human health and vitality.

Herbal Research & Development Institute



Fibers



the outer bast fibers of the stalk usually made into long strands.

Hemp cultivation requires no chemicals, pesticides or herbicides.

Hurds



leftover pieces of stem and stalk made into small, chunk form pieces.

Hemp can be dated back more than 10,000 years. The Columbia History of the World states that the oldest relic of human industry is a bit of hemp fabric that dates back to approximately 8,000 BC.

Seeds & Oil



hemp seeds can be used both raw and for the oils they produce.

known to have over 50,000 different uses...



can replace Textiles • Any Cotton Based Products • Rope • Canvas • Cording



can replace Insulation • Almost all molded Plastics & Fiberglass • Acrylics combined with hemp hurds



can replace Paper Products • Cement & many building materials combined with hemp fibers • can replace fibers & plastics combined with hemp hurds • Animal bedding & soil amendment

through a heat process called **Pyrolysis** Hemp hurds can be cleanly converted into

GASOLINE!!
This hemp biomass can also make Ethanol, Methanol, Methane Gas

HEMP BIOMASS CAN CREATE ELECTRICITY

Hemp hurds can produce ten tons of biomass per acre every 4 months. Enough biomass could be produced on 6% of US land mass to provide energy for the entire country.



cosmetic and beauty items • great for skin & hair health



dairy products, butter, milk • burger patties • many other foods • BEER

histidine • isoleucine • leucine • lysine • methionine • threonine • phenylalanine • tryptophan • valine

contains all nine essential amino acids • large amounts of protein • vitamins A, B, C, & D • medicinal purposes



WINONA'S HEMP MARKET + COFFEE SHOP

We are local organic farmers, and artisan gift store featuring local traditional foods, native art and so much more.

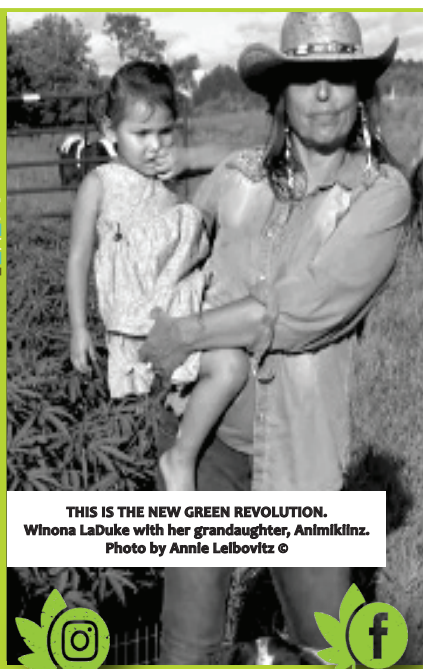
FIND US ON THE MAP
47075 MN-34,
OSAGE, MN 56570
WWW.WINONASHEMP.COM

- OUR COFFEE IS ORGANIC + FAIR TRADE
- COFFEE IS ROASTED LOCALLY AT ROUND LAKE - PONSFORD

NOW OPEN

SNELLMAN, MN ON HWY 34 THURSDAY TO SUNDAYS

LOCAL ANISHINAABE FARMED HEMP + TRADITIONAL HERTIAGE FOODS
OUR HEMP IS FEATURED IN OUR ARTISAN FOODS AND OTHER PRODUCTS



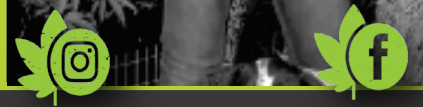
THIS IS THE NEW GREEN REVOLUTION. Winona LaDuke with her granddaughter, Animklinz. Photo by Annie Leibovitz ©



BUY NATIVE
SUSTAIN ORGANIC FARMERS
Build to Vitalize the local Native Artisan Economy
SUPPORT LOCAL
Grow the Local Food Market and join us for a Cup of Coffee



VIEW REVIEWS ON



@winonaladuke /winonashemp